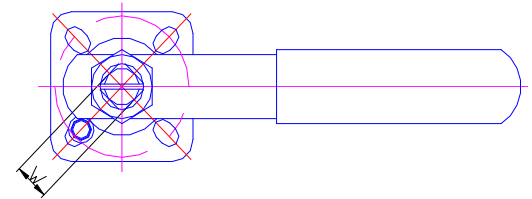
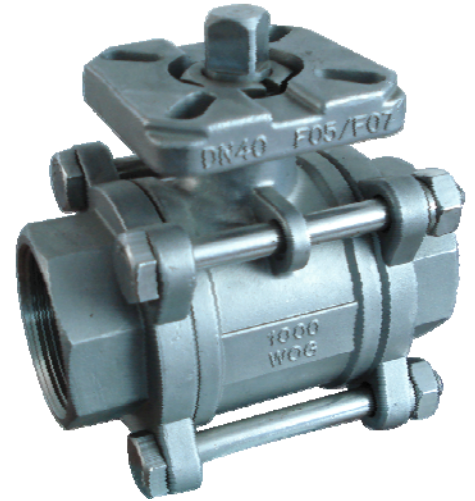


CARBON STEEL OR STAINLESS STEEL 3-PC BALL VALVE BOLTED CAP DESIGN

DESIGN DESCRIPTION:

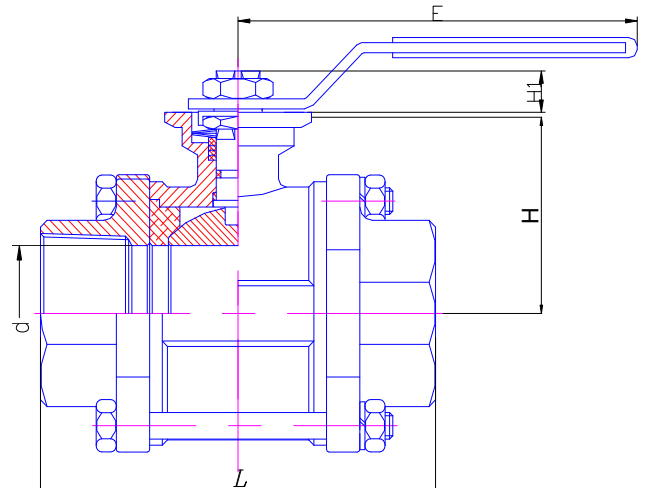
- Design: Factory STD;
- Manufacture: Factory STD;
- Pressure-Temperature Ratings: ANSI B16.34
- Threaded: NPT, BSP/BSPT, DIN STD;
- Test: API598, DIN3230;
- 3-PC Stainless Steel Ball Valve
- Investment Casting Body
- Blow-Out Proof Stem/ Full Port/STD Port/Reduce Port
- Soft seal; 1000WOG;
- ISO 5211 **Direct Mount Pad**
- Option: Handle Or Locking Handle
- Material and Working Temp.:
 - ◆ PTFE&R-PTFE: 0°C-180°C(32°F-356°F)
 - ◆ PPL: 300°C(572°F) Maximum



PARTS AND MATERIAL:

PARTS NAME	MATERIALS
BODY	ASTM A216 WCB/A351 Gr.CF8/CF8M/CF3/CF3M
CAP	ASTM A216 WCB/A351 Gr.CF8/CF8M/CF3/CF3M
BALL	ASTM A216 WCB/A351 Gr.CF8/CF8M/CF3/CF3M
STEM	S.S 304/316/304L/316L
BALL SEATS	PTFE
STEM PACKING	PTFE
GLAND	ASTM A216 WCB/A351 Gr.CF8/CF8M/CF3/CF3M
THRUST WASHER	PTFE
HANDLE	S.S 304
HANDLE NUT	S.S 304/316/304L/316L
HANDLE WASHER	S.S 304/316/304L/316L
BOLTS	S.S 304/316/304L/316L
BOLTS NUTS	S.S 304/316/304L/316L
BLOTS WASHERS	S.S 304/316/304L/316L
HANDLE SLEEVE	VINYL GRIP

OTHER MATERIALS ARE AVAILABLE UPON REQUEST.



DIMENSIONS LIST(UNIT:MM):

DN	Size	d	L	D1	H	H1	E	ISO5211	W
6	1/4"	12.5	65	98	68.5	6.6	110	F03/F04	9
10	3/8"	12.5	65	98	68.5	6.6	110	F03/F04	9
15	1/2"	15	75	125	72	6.6	140	F03/F04	9
20	3/4"	20	80	125	78	7.1	140	F03/F04	9
25	1"	25	85	145	90	10.9	170	F04/F05	11
32	1-1/4"	32	105	145	95	10.9	170	F04/F05	11
40	1-1/2"	38	113	205	107	13.9	180	F05/F07	14
50	2"	50	133	205	122	13.9	180	F05/F07	14
65	2-1/2"	64	170	250	155	16.8	220	F07/F10	17

Remark: Our design can be suitable for all standard (BS, DIN, ANSI, JIS standard etc.)

✧ We hereby reserve the rights of any alternative dimension that would help to improve our valve's quality and working efficiency.