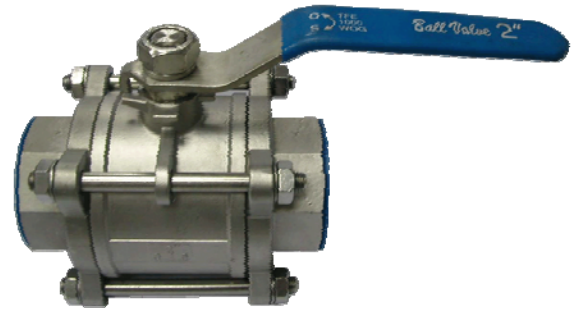


CARBON STEEL OR STAINLESS STEEL 3-PC BALL VALVE BOLTED CAP DESIGN

DESIGN DESCRIPTION:

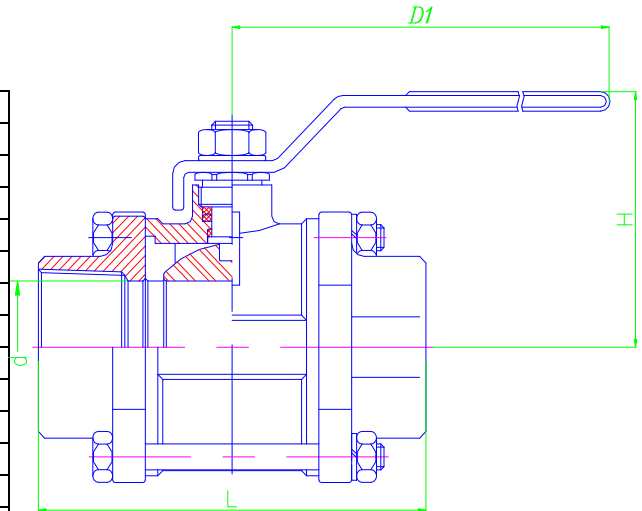
- Design: Factory STD;
- Manufacture: Factory STD;
- Pressure-Temperature Ratings: ANSI B16.34
- Threaded: NPT, BSP/BSPT, DIN STD;
- Test: API598, DIN3230;
- 3-PC Stainless Steel Ball Valve
- Investment Casting Body
- Blow-Out Proof Stem/ Full Port/STD Port/Reduce Port
- Soft seal; 1000WOG;
- Option: Handle Or Locking Handle
- Material and Working Temp.:
 - ◆ PTFE&R-PTFE: 0°C-180°C(32°F-356°F)
 - ◆ PPL: 300°C(572°F) Maximum



PARTS AND MATERIAL:

PARTS NAME	MATERIALS
Body	ASTM A216 WCB/A351 Gr.CF8/CF8M/CF3/CF3M
Cap	ASTM A216 WCB/A351 Gr.CF8/CF8M/CF3/CF3M
Ball	A351 Gr.CF8/CF8M/CF3/CF3M
Stem	S.S 304/316/304L/316L
Ball Seats	PTFE
Stem Packing	PTFE
Gland	S.S 304/316/304L/316L
Thrust Washer	PTFE
Handle	S.S 304
Handle Nut	S.S 304/316/304L/316L
Handle Washer	S.S 304/316/304L/316L
Bolts	S.S 304/316/304L/316L
Bolts Nuts	S.S 304/316/304L/316L
Blots Washers	S.S 304/316/304L/316L
Handle Sleeve	VINYL GRIP

OTHER MATERIALS ARE AVAILABLE UPON REQUEST.



DIMENSIONS LIST(UNIT:MM):

DN	Size	d	L	D1	H
6	1/4"	8	65	98	57
10	3/8"	10	65	98	57
15	1/2"	15	75	125	68
20	3/4"	20	85	125	70
25	1"	25	95	145	80
32	1-1/4"	32	115	145	84
40	1-1/2"	38	125	205	93
50	2"	50	150	205	100
65	2-1/2"	64	175	250	142
80	3"	76	216	265	155
100	4"	100	260	300	172

Remark: Our design can be suitable for all standard (BS, DIN, ANSI, JIS standard etc.)

✧ We hereby reserve the rights of any alternative dimension that would help to improve our valve's quality and working efficiency.