

CAST STEEL OR STAINLESS STEEL KNIFE GATE VALVE BOLTED GLAND

DESIGN DESCRIPTION:

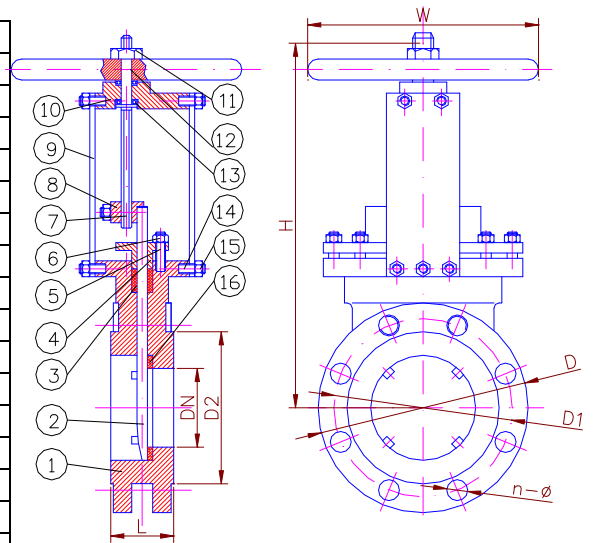
- Design: MSS SP-81;
- Manufacture: Factory STD;
- Face To Face: MSS SP-81
- Flange: ANSI B16.5;
- Bolt Gland;
- Soft Seal;
- Material and Working Temp.:
 - ◆ Cast Steel: -20 °C-400 °C(-4°F -752°F)
 - ◆ PTFE: 180 °C(356°F) Maximum
 - ◆ Stainless Steel Seal: 180 °C(356°F) Maximum



PARTS AND MATERIAL:

NO.	PARTS NAME	MATERIALS
1	BODY	ASTM A216-WCB/A351-CF8/A351-CF8M
2	DISC	ASTM A351-CF8/A351-CF8M/A216-WCB
3	GLAND PACKING	PTFE/NBR/CARBIDE ALLOY/S.S.
4	GLAND	ASTM A216-WCB
5	BONNET BOLT	ASTM A193-B7
6	BONNET NUT	ASTM A194-2H
7	STEM	ASTEM SS304/SS316/CARBON STEEL
8	STEM NUT	BRASS/STAINLESS STEEL
9	YOKE PLATE	CARBON STEEL
10	YOKE RETAINER	ASTM A216-WCB/A351-CF8/A351-CF8M
11	H.W. LOCK NUT	CARBON STEEL
12	HANDWHEEL	CAST IRON
13	BEARING	BRING STEEL
14	YOKE PLATE BOLT	ASTM A193-B7
15	YOKE PLATE NUT	ASTM A194-2H
16	SEAT	NBR/PTFE/S.S/CARBIDE ALLOY

OTHER MATERIALS ARE AVAILABLE UPON REQUEST.



DIMENSIONS LIST(UNIT:MM):

SIZE	DN	L	H	W	D	D1	D2	n-Φ
2"	50	48	398	180	152	121	92	4-19
2-1/2"	65	48	415	180	178	139	105	4-19
3"	80	51	445	220	190	152	127	4-19
4"	100	51	497	220	229	191	157	8-19
5"	125	57	575	230	254	216	186	8-22
6"	150	57	635	280	279	241	216	8-22
8"	200	70	775	360	343	298	278	8-22
10"	250	70	940	360	406	362	324	12-25
12"	300	76	1030	400	483	432	381	12-25
14"	350	76	1186	400	533	476	413	12-28
16"	400	89	1365	400	597	540	470	16-28
18"	450	89	1620	530	635	578	533	16-32
20"	500	114	1720	530	699	635	584	20-32
24"	600	114	1860	600	813	749	692	20-35
30"	750	117	2250	600	887	846	813	44-22
36"	900	117	2800	800	1057	1009	972	44-26

✧ We hereby reserve the rights of any alternative dimension that would help to improve our valve's quality and working efficiency.